



BioBharati LifeScience Pvt. Ltd.

Developing Best Products for Quality Research of National Significance

EN-35, Salt Lake, Sector-V, Kolkata, INDIA, PIN: 700091

E-mail: biobharati@gmail.com, Web: www.biobharati.com

Mobile No.: +91-9836508080, Land Line: +91-33-40077640.

Product Name	Cat. No.	Pack Size
Rabbit Anti-Mouse IgG-HRP Conjugated	# BB-SAB02A	250 µg (250 µl)
	# BB-SAB02B	500 µg (500 µl)
	# BB-SAB02C	1000 µg (1000 µl)

Product type: HRP Conjugated Secondary Antibody

Anti-Mouse IgG whole molecule antibody generated in rabbit detects specifically mouse IgG whole molecule. This product is thoroughly validated with BBL primary antibodies and is ideal for investigators who routinely perform ELISA, Sandwich ELISA, Titration Assays, Western-Blot, Immunoprecipitation and more generally Immunoassays.

Purification: This product was prepared by immunization of Rabbit using Fc-Portion of Mouse IgG-Heavy-Chain and purification of generated Rabbit-Antiserum by Affinity Chromatography employing Protein A coupled Affinity Resin followed by Chemical Conjugation of the affinity purified Rabbit-Anti-Mouse IgG with Horseradish Peroxidase (HRP) enzyme.

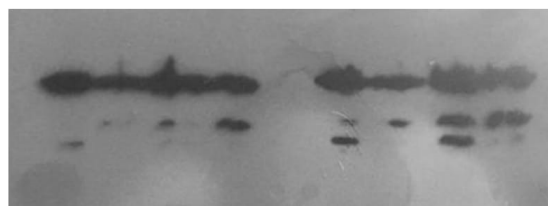
Clonality: Polyclonal
Concentration: 1 mg/ml
Source: Rabbit
Immunogen: Mouse IgG-Fc-Heavy chain
Conjugate: Horseradish Peroxidase

Recommended Dilutions:

Western Blotting 1:3,000 - 5,000
 ELISA 1:10,000 - 20,000

Western Blott with protein (Lane 1 to 4 loaded 20 micro gram & Lane 5 to 8 loaded 40 micro gram) extracted from differently treated rice plant leaf using mouse monoclonal CRY1Ab. **Primary Ab** dilution - 1 : 2,000 (CRY1Ab). **Secondary Ab (BBL-Rabbit anti mouse - HRP conjugated).**

Lanes 1 2 3 4 C 5 6 7 8



C: Control lane with 40 micro gram protein with no-treated rice plant leaf

Storage: Supplied in Sodium Azide free 100 mM phosphate buffered saline pH 7.3, containing 45% glycerol and 2% bovine serum albumin. **Store at 4°C (Recommended).**

Caution: NEVER FREEZE. Use by 18 months, if stored as specified.

Brief Spin down the content of the vial before use.

N.B. (Membrane blocking): One hour at RT in 5% (w/v) non-fat-milk. (Primary Ab): Overnight at 4°C in 1% non-fat-milk. (Secondary Ab): One hour at RT in 1% non-fat-milk. All incubations and washings are in 1 X TBS, 0.1% Tween-20.

For Research Purpose Only. Not For Use in Diagnostic Procedures.