



## Human IL-6 Protein

Cat# BB-PE0150 100µg (1mg/ml)

**Product type:** Human interleukin 6 (IL-6) 29-212 aa

**Source:** Recombinant protein expressed as His Tag protein in *E. coli*.

**Protein Sequence:**

VPPGEDSKDVAAPHRQPLTSSERIDKQIRYILDGISA  
LRKETCNKSNMCESSKEALAENNLNLPKMAEKDGC  
FQSGFNEETCLVKIITGLLEFEVYLEYLQNRFSSEE  
QARAVQMSTKVLIQFLQKKAKNLDAITTPDPTTNASL  
LTKLQAQNQWLQDMTTHLILRSFKEFLQSSLRALRQ  
M

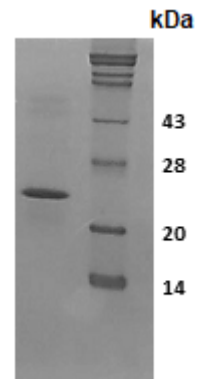
**Purity:** >98%, by SDS-PAGE under reducing conditions and visualized by coomassie stain

**Formulation:** Supplied as a 0.2 µm filtered solution in PBS with 50% Glycerol.

**Specificity:** Acts both on human and murine cell lines

**Description:** Interleukin-6 (IL-6) is a 22-28 kDa phosphorylated and variably glycosylated cytokine that plays important roles in the acute phase reaction, inflammation, hematopoiesis and bone metabolism. Mature human IL-6 is 183 amino acids (aa) in length and shares 39% aa sequence identity with mouse IL-6. Aberrant IL-6 activity contributes to chronic inflammation in obesity, insulin resistance, inflammatory bowel disease, arthritis, sepsis, and atherosclerosis.

**Storage instructions:** Store at -20°C (Recommended).



*\*SDS-PAGE analysis of human IL-6 (MW ~22 kDa).*

\* Exp. Date: 18 months upon receiving at proper storage condition as mentioned in datasheet.