

Mouse - IL6

Cat# BB-PE0160 100µg (1mg/ml)

Product type: Murine interleukin 6 (IL-6) aa 25-211

Source: Recombinant protein expressed in *E. coli*

Alternative Name: IFN-beta 2; MGI-2A

Protein Sequence:

FPTSQVRRGDFTEDTTPNRPVYTTSQVGGGLITHVL
WEIVEMRKELCNGNSDCMNND DALAENNLKLPEIQ
RNDGCYQTGYNQEICLLKISSGLLEYHSYLEYMKN
LKDNKKDKARVLQRDTETLIHIFNQE VKDLHKIVLPT
PISNALLTDKLESQKEWLRTKTIQFILKSLEEF LKVT
L RSTRQT

Purity: >95%, by SDS-PAGE under reducing conditions and visualized by coomassie stain

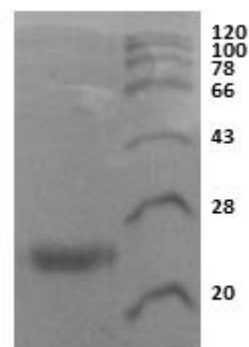
Formulation: Supplied as a 0.2 µm filtered solution in PBS at 100 µg (1mg/ml) containing 50% Glycerol.

Specificity: Acts both on human and murine cell lines

Stability: Stable for 1 year at -20°C

Description: Interleukin-6 (IL-6) is a 22-28 kDa phosphorylated and variably glycosylated cytokine that plays important roles in the acute phase reaction, inflammation, hematopoiesis and bone metabolism. Mature murine IL-6 is 187 amino acids (aa) in length and shares 39% aa sequence identity with human IL-6. Aberrant IL-6 activity contributes to chronic inflammation in obesity, insulin resistance, inflammatory bowel disease, arthritis, sepsis, and atherosclerosis.

Storage instructions: Store at -20°C (Recommended).



**SDS-PAGE analysis of murine IL-6 (MW ~22 kDa).*

*N. B. Exp. Date: 18 months upon receiving at proper storage condition as mentioned in datasheet.